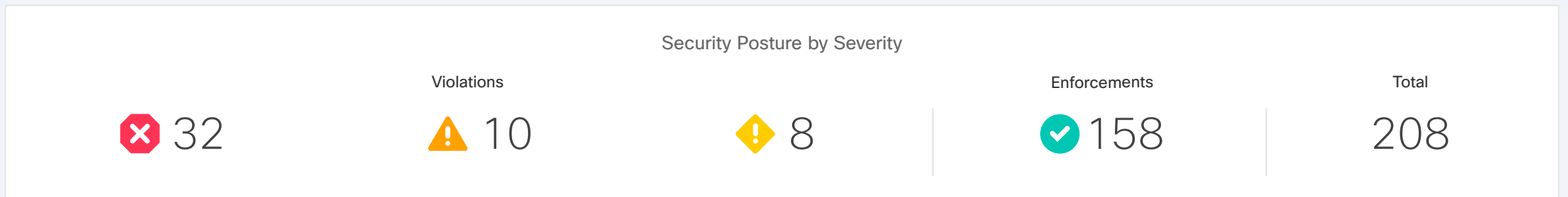




Analyze / Policy / Security Adherence



Security Posture by Policy Type

Type	Violations	Enforcements
Deny Policy	✖ 32	✔ 90
Allow Policy	⚠ 10	✔ 34
Deny Log Policy	⚡ 3	✔ 22
Allow Log Policy	⚡ 5	✔ 12

Root Causes for Security Violations

Root Cause	Leaf Count with Violations
Controller-Leaf Out of Sync	5 of 20 Leafs
Leaf-Hardware Out-of-Sync	4 of 20 Leafs
Both root causes	2 of 20 Leafs

Top Leafs by Security Violations

Leaf	BizPriority	Violations
rtp1-ac0...w1011	P1	✖ 32
rtp1-ac0...w1101	P1	⚠ 10
rtp1-aa1...w3911	P1	⚡ 3
rtp1-aw...w3914	P2	⚡ 5
rtp1-au0...w1112	P2	⚡ 5

[View violations on 12 of 20 Leafs](#)

Top Tenants by Security Violations

Tenant	BizPriority	Violations
Pepsi	P1	✖ 32
Coke Cola	P1	⚠ 10
Target	P1	⚡ 3
Intuit	P2	⚡ 5
Macy's	P2	⚡ 5

[View violations on 7 of 18 tenants](#)

Top Application Profiles by Security Violations

Application Profile	BizPriority	Violations
lae2_ga3	P1	✖ 32
platfora-1-poc	P1	⚠ 10
metr...-storage-ap	P1	⚡ 3
platfora-1-poc	P2	⚡ 5
simdmz-l3Out	P2	⚡ 5

[View violations on 14 of 26 application profiles](#)

Top EPGs by Security Violations

EPG	BizPriority	Violations
lae2inp	P1	✖ 32
platfora-1-app	P1	⚠ 10
nas-mc-np...-01-epg	P1	⚡ 3
platfora-1-app	P2	⚡ 5
infra-osinfra-extNet	P2	⚡ 5

[View violations in 17 of 30 EPGs](#)

Top EPG Pair by Security Issues

Source EPG	Destination EPG	BizPriority	Violations
lae2inp	hadoop-1-cluster	P1	✖ 32
platfora-1-app	fn-d-lae2inp-extNet	P1	⚠ 10
nas-mc-nprd-svm-01-epg	infra-osinfra-extNet	P1	⚡ 3
platfora-1-app	nas-internal-prd-svm-03-epg	P2	⚡ 5
infra-osinfra-extNet	aci-test-dmz-epg	P2	⚡ 5

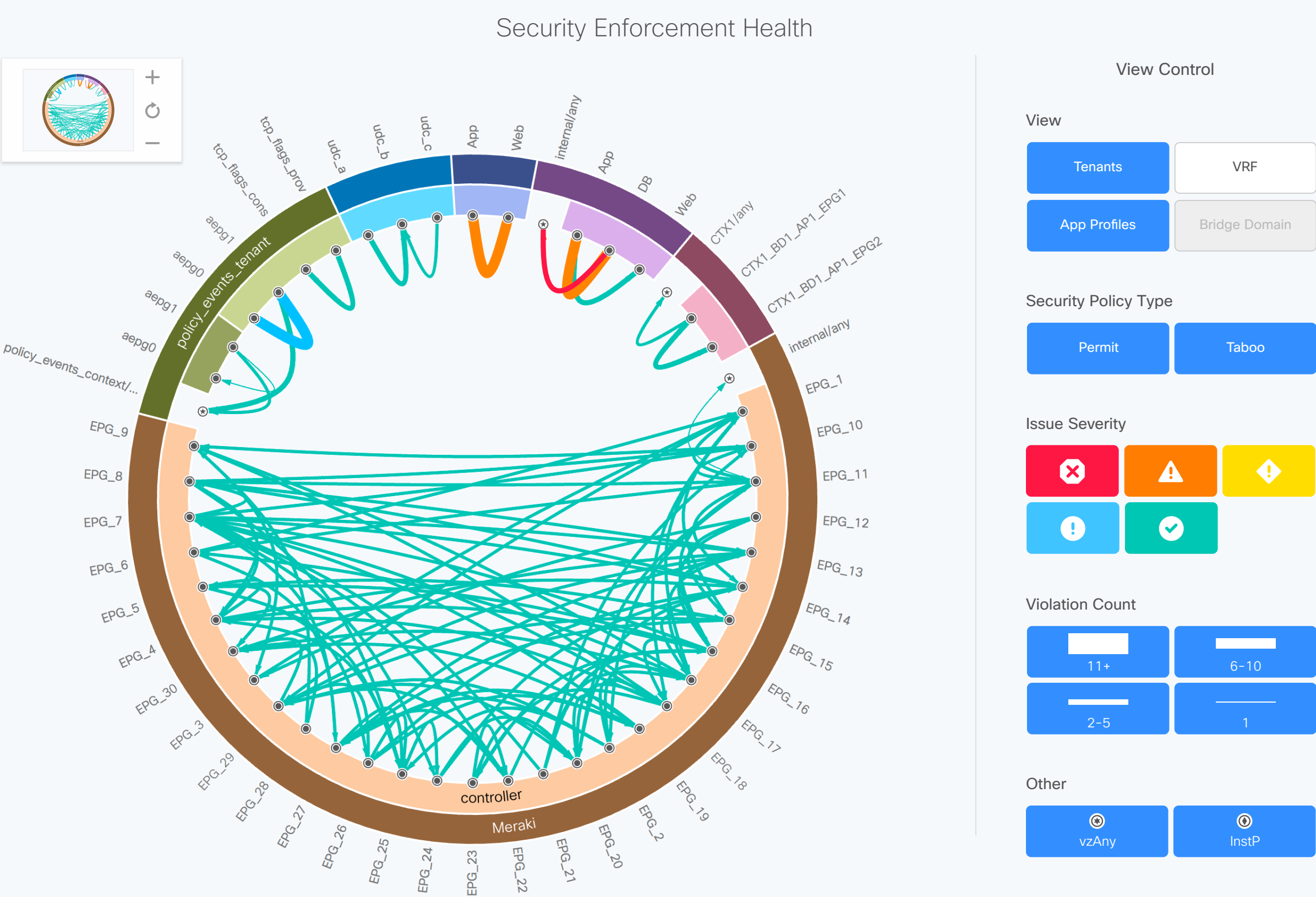
[View violations in 12 of 128 EPG pairs](#)

Least Used Security Policies by Hit Count

Provider EPG	Provider EPG	Leaf	Contract	Filter	W/In 1 Hr.	W/In 1 Day	W/In 1 Wk.	W/In 1 Mo.	Cumulative
platfora-1-app	platfora-6-app	rtp1-ae07-fab1-sw...	tn-regress5/brc-infra...	flt-dst-syslog-filter	0	0	0	0	0
platfora-2-app	platfora-7-app	rtp1-ac09-fab1-sw...	tn-regress5/brc-infra...	flt-udp-rpc	0	0	0	0	0
platfora-3-app	platfora-8-app	rtp1-aa10-fab1-sw...	tn-regress5/brc-infra...	icmp	0	0	0	0	0
platfora-4-app	platfora-9-app	rtp1-aw10-fab1-sw...	tn-regress5/brc-infra...	flt-dst-tcp-filter	0	0	0	0	0
platfora-5-app	platfora-10-app	rtp1-au09-fab1-sw...	tn-regress5/brc-infra...	flt-dst-syslog-filter	0	0	0	0	0

[View all 128 Leafs](#)

LEAF candid-leaf1 x TENANT uni/tn-policy_events_tenant x LEAF candid-leaf1 x TENANT uni/tn-policy_events_tenant x Reset



Tenant Security Events

10 total events

Severity	Event Code	Description	Provider EPG	Consumer EPG
✔	APPLIANCE_WEB_SERVICES_OPERATION_NORMAL	Infrastructure resources operating normally	DB	internal/any
⚠	APPLIANCE_DATABASE_REACHING_LIMIT	Database has reached a key utilization threshold	epg1-valid	ctx0/any
✖	CLUSTER_OPERATING_BEYOND_CAPACITY	Cluster is operating at a lower capacity in comp...	DB	App
✔	APPLIANCE_INFRA_RESOURCE_OPERATION_NORMAL	Infrastructure resources operating normally	DB	App
✔	APPLIANCE_DATABASE_OPERATION_NORMAL	Infrastructure resources operating normally	DB	App
✖	CLUSTER_OPERATING_BEYOND_CAPACITY	Cluster is operating at a lower capacity in com...	DB	App
✔	APPLIANCE_DATABASE_OPERATION_NORMAL	Infrastructure resources operating normally	DB	App



LEAF candid-leaf1 x TENANT uni/tn-policy_events_tenant x LEAF candid-leaf1 x TENANT uni/tn-policy_events_tenant x Reset

Security Enforcement Health

Back

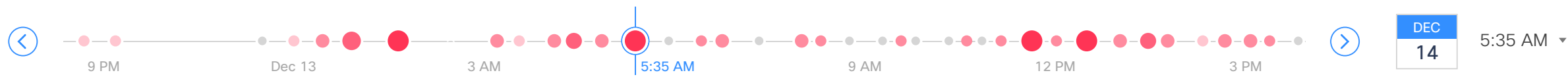
tn-regress5/brc-infra-syslog-contract

- subj-udp-syslog
 - filt-dst-syslog-filter
 - dst-udp-syslog [udp, dport:514]
 - dst-tcp-syslog [tcp, dport:514]
 - subj-syslog-API
 - filt-udp-rpc
 - dst-udp-889 [udp, dport:889]
 - filt-dst-tcp-filter
 - dst-tcp-8089 [tcp, dport:8089]
 - dst-tcp-9997 [tcp, dport:9997]

tn-regress5/brc-infra-icmp-contract

tn-regress5/brc-tcp-est-contract





Dashboard

Epoch Trend

Smart Events by Severity

Critical 314 Major 998 Minor 54 Warning 294 Info 675 Total 2,335

Category	Critical	Major	Minor	Warning	Info	Total
Tenant Endpoint	196	187	0	4	224	611
Real Time Change Analysis	0	376	15	127	74	592
Tenant Forwarding	50	191	21	161	108	531
Resource Security	66	238	18	1	261	584
Resource Utilization	0	0	0	1	4	5
System	2	6	0	0	4	12
Compliance	0	0	0	0	1	2

Unhealthy Count by Resource

App Profiles	Bridge Domains	Contracts	Endpoints	Endpoint Group (EPG)	External Routes
29 / 180	24 / 85	10 / 50	31 / 295	132 / 1,529	22 / 186
External Routed Networks (L3Outs)	Interfaces	Internal Subnets	Leaf	Tenants	VRFs
20 / 226	32 / 245	167 / 189	2 / 4	19 / 226	24 / 380

Endpoints by Leaf

Leaf	Unhealthy EPs	Total EPs
candid5-leaf1	185	189
candid5-leaf2	18	21
candid5-leaf3	7	7
candid5-leaf4	5	5

[View endpoint issues on all leaves](#)

Routes by Leaf

Leaf	Internal...	External...	Total...
candid5-leaf1	1,092	101	1,190
candid5-leaf2	1,038	0	1,038
candid5-leaf3	611	99	710
candid5-leaf4	345	15	360

[View route counts on all leaves](#)

Policy CAM by Leaf

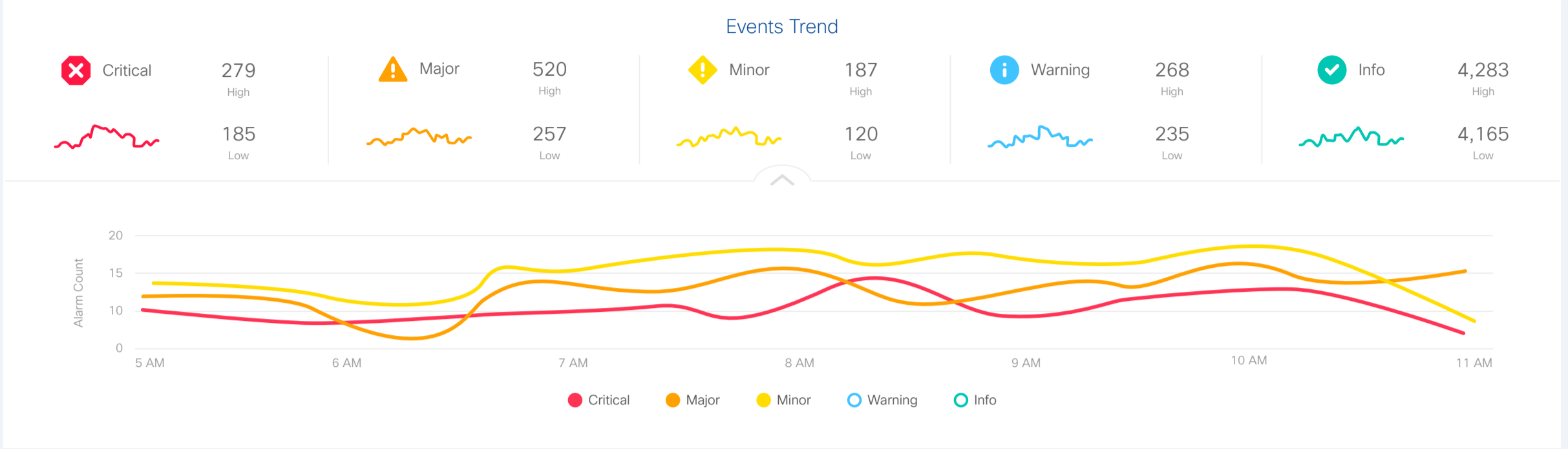
Leaf	% Used
candid5-leaf1	0.68%
candid5-leaf2	0.46%
candid5-leaf3	0.28%
candid5-leaf4	0.00%

[View policy CAM usage on all leaves](#)

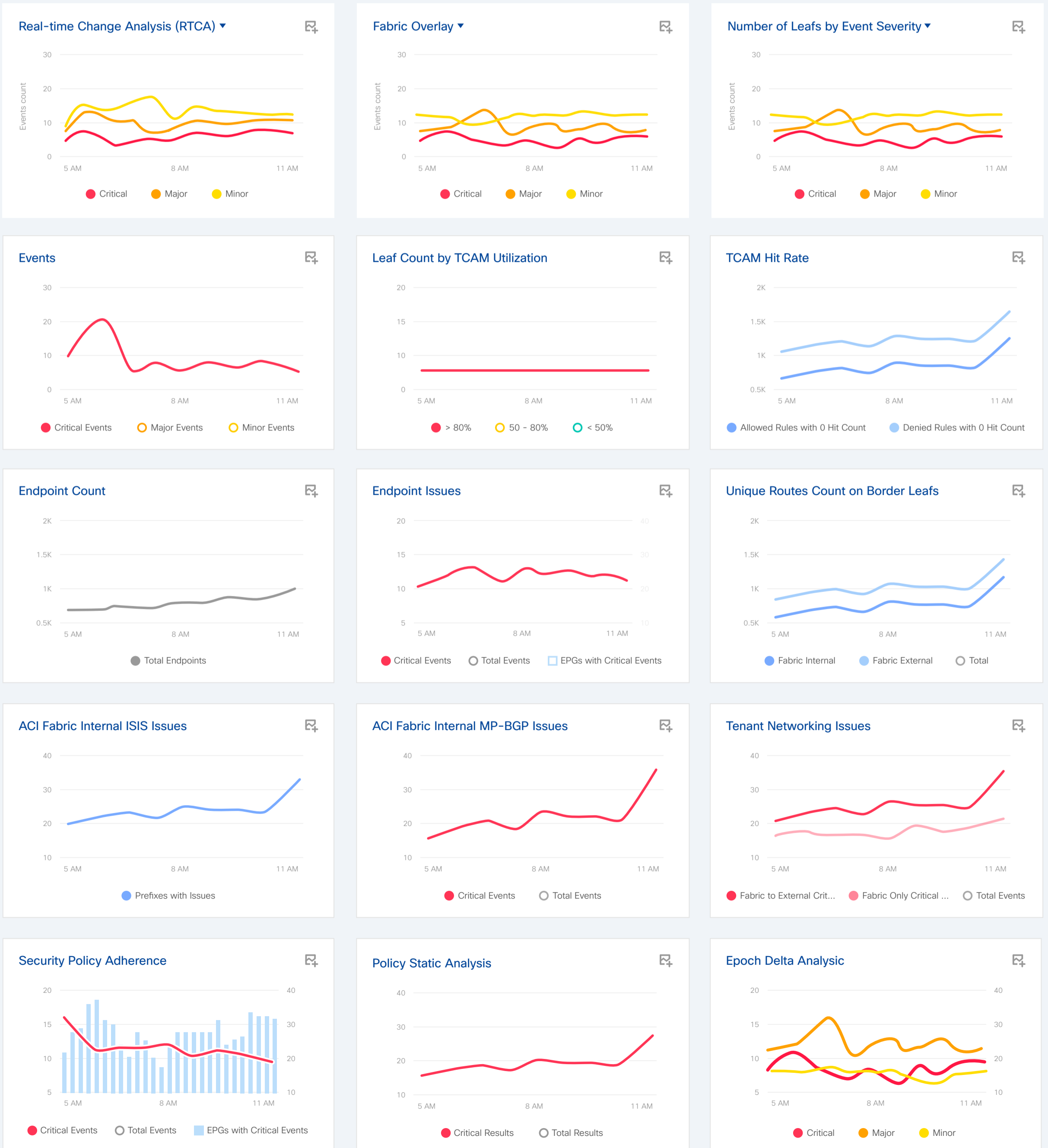


Dashboard

Epoch Trend



Event Analysis





Epoch Delta / Epoch Delta Analysis ⌘

Epoch Delta Analysis

Delta Analysis Analysis Management

Delta Analysis 1

Earlier Epoch: 04/04/2018 1:46:30 PM PDT

Later Epoch: 04/05/2018 5:56:30 PM PDT

Time Range: 1 day 4 hr 10 min 00 sec

Dashboard | Health Delta | **Policy Delta** | State Delta | Capacity Delta | Operator Delta

Added Deleted Modified Unchanged

🔍 Search in policy



Affected Resources (8)

- Tenant A
 - BD AA
 - BD AB
 - EPG 1
 - 2** EPG 2
 - EPG
 - uni/tn-david-any-zero-cases/ap-n...
 - [Cross launch to APIC](#)
 - 1 Added, 1 Deleted
 - 7 Deleted 23 Modified 2 Unchanged
 - EPG 3
 - Contract 11
 - Contract 12

Policy Viewer

Export policy

0 of 0

```

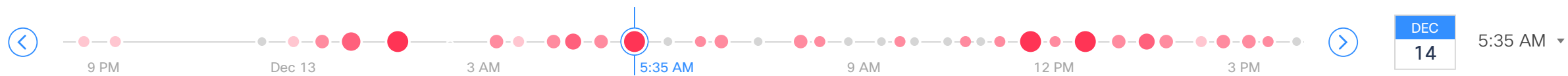
1 <?xml version="1.0" ?>
2 <polUni dn="uni" nameAlias="" >
3   <dbgDebugP descr="" dn="uni/dbg" name="" nameAlias="" />
4   <l2extDomP dn="uni/l2dom-navtestdom" name="navtestdom"
5   nameAlias="" ownerKey="" ownerTag="" >
6     <infraRsVlanNs dn="" tDn="uni/infra/vlanns-[navtestvlanpool_]
7   ic" />
8   </l2extDomP>
9   <l2extDomP dn="uni/l2dom-l2dom_epdemo" name="l2dom_epdemo"
10  nameAlias="" ownerKey="" ownerTag="" >
11     <infraRsVlanNs dn="" tDn="uni/infra/vlanns-[ep-
12  demo_vlan_pool]-static" />
13   </l2extDomP>
14   <l2extDomP dn="uni/l2dom-l2dom_P" name="l2dom_P" nameAlias=""
15   ownerKey="" ownerTag="" >
16     <infraRsVlanNs dn="" tDn="uni/infra/vlanns-[Ext-vlans]-static" />
17   <l2extDomP dn="uni/l2dom-l2dom_global" name="l2dom_global"
18   nameAlias="" ownerKey="" ownerTag="" >
19     <infraRsVlanNs dn="" tDn="uni/infra/vlanns-[vlanPool_global]-stat-
20   ic" />
21   </l2extDomP>
22   <bbbUserEp descr="" dn="uni/userext" name="" nameAlias="" owner-
23   Key="" ownTaShow below lengthCheck="no" >
24     <aaaUserRole descr="" dn="" name="read-all"
25     nameAlias="" ownerKey="" ownerTag="" privType="readPriv" />
26     <aaaUserRole descr="" dn="" name="aaa" nameAlias=""
27     ownerKey="" ownerTag="" privType="readPriv" />
28     HighSet="100.000000" warnLowReset="0.000000" warnLowSet="0.000000" />
29   </statsColl>
30   mal="0.000000" propId="compRcvdErrPktsDropRate" warnHighRe-
31   set="9.000000"
32   </l2extDomP>
33   <l2extDomP dn="uni/l2dom-l2dom_off" name="l2dom_off" nameAlias=""
34   ownerKey="" ownerTag="" >
35     <lldplfPol adminRxSt="disabled" adminTxSt="disabled" descr=""
36     dn="" name="lldpOff" nameAlias="" ownerKey="" ownerTag="" />

```

Audit Log

10 21 15

- 04/04/2018 1:46:30.017 PM PDT Dhruv Jain
 - RsBd added
 - uni/tn-epoch_delta_test_1/ap-policy-diff/epg-EPG1/rsbd
 - matchT:AtleastOne, prio:unspecified, tnVzBrCPName:
 - [Cross launch to APIC](#)
- 04/04/2018 1:46:30.017 PM PDT Dhruv Jain
 - RsBd added
 - uni/tn-epoch_delta_test_1/ap-policy-diff/epg-EPG1/rsbd
 - No chang set
 - [Cross launch to APIC](#)

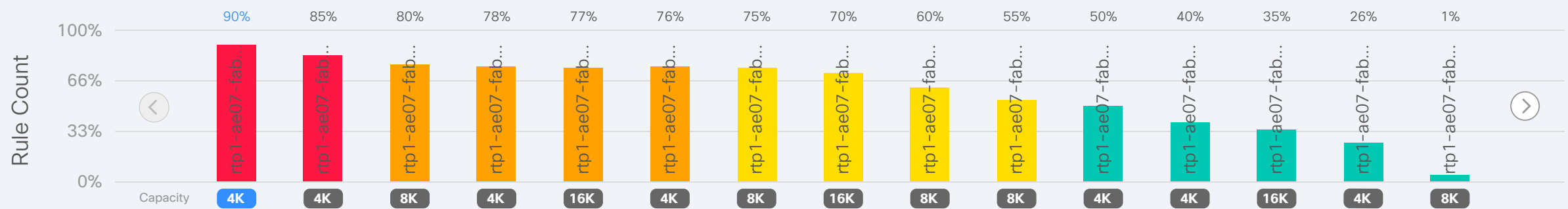


Policy CAM Analysis

Enter search criteria

Reset

[View all 128 leafs](#)



Associated Policies for rtp1-ae07-fab1-sw1011

Provider Tenant	Consumer Tenant	Provider EPG	Consumer EPG	Contract	Filter
Macy's_1 12,810 / 61,000	lae2inp 2,890 / 12,810	hadoop-1-cluster 2,842 / 12,810	internal 2,835 / 12,810	infra-icmp-contract 2,875 / 12,810	icmp 2,845 / 12,810
Intuit 12,810 / 61,000	platfora-1-app 2,718 / 12,810	fnd-lae2inp-extNet 2,793 / 12,810	internal 2,787 / 12,810	infra-tcp-est-contract 2,732 / 12,810	tcp-est-filter 2,657 / 12,810
Target 12,810 / 61,000	nas-mc-...01-epg 2,675 / 12,810	infra-osinfra-extNet 2,610 / 12,810	shared 2,647 / 12,810	prod-inter-db-contract 2,642 / 12,810	dst-...-1500-2000-filter 2,493 / 12,810
Pepsi 12,810 / 61,000	platfora-1-app 2,432 / 12,810	nas-internal-03-... 2,532 / 12,810	policy_events_context 2,574 / 12,810	test-udp-rpc 2,413 / 12,810	src-udp-889-filter 2,375 / 12,810
Other 12,810 / 61,000	Other 2,822 / 12,810	Other 2,786 / 12,810	Other 2,823 / 12,810	Other 2,794 / 12,810	Other 2,810 / 12,810

Manage Compliance

Object Selectors (12)
Traffic Selectors (7)
Compliance Requirements (6)
Compliance Requirement Sets (4)

[+ Create New Object Selector](#)

Create New Obejct Selector

Object Selector Name

Description (Optional)

Object Selector Type

Included EPGs

Include EPGs in

that are also in

Include EPGs in

[Add Included EPGs](#)

Excluded EPGs (Optional)

Exclude EPGs in

that are also in

[Add Excluded EPGs](#)

EPGs Matching the Object Selector Criteria

12 EPGs total

EPG Name ▾	DN
Filter	Filter
amb2_epg1	uni/tn-amb/ap-amb2-AP/epg-amb2_epg1
amb2_epg2	uni/tn-amb/ap-amb2-AP/epg-amb2_epg2
amb2_epg3	uni/tn-amb/ap-amb2-AP/epg-amb2_epg3
ctx1-bd1-epg1	uni/tn-bell01/ap-ctx1-ap1/epg-ctx1-bd1-epg1
ctx1-bd1-epg2	uni/tn-bell01/ap-ctx1-ap1/epg-ctx1-bd1-epg2
ctx1-bd2-epg1	uni/tn-bell01/ap-ctx1-ap1/epg-ctx1-bd2-epg1
ctx1-bd2-epg2	uni/tn-bell01/ap-ctx1-ap1/epg-ctx1-bd2-epg2
dhcp-Client1	uni/tn-common/ap-dhcpAP1/epg-dhcp-Client1
dhcp-Client2	uni/tn-common/ap-dhcpAP1/epg-dhcp-Client2
dhcp-Server	uni/tn-common/ap-dhcpAP1/epg-dhcp-Server

< 1 2 >
Rows 10 25 50 100

Cancel
Save

12 Object Selectors | ☰ | ⚙️

Obejct Selector Name	Obejct Selector Type	Associated Requirements	Description
Filter	Filter ▾	Filter	
⚙️ Selector 1	EPG	Req4 Req5 Req3 View All 11	Lorem ipsum dolor sit amet, consectetur adipiscing elit. Sed hendrerit nulla a lectus vulputate, volutpat condimentum quam egestas. Sed id neque sed nulla tincidunt egestas maximus vitae felis.
⚙️ Selector 2	EPG	Req7 Req3 Req2 View All 12	Pellentesque quis ligula auctor, bibendum ipsum nec, pellentesque enim. Etiam vestibulum diam sem, ut mattis nulla finibus at. Proin erat lorem, vehicula a lectus sed, commodo lobortis quam.
⚙️ Selector 3	EPG	Req4 Req5 Req3 View All 13	Proin a quam quis lectus blandit congue vitae sed orci. Cras bibendum consequat turpis, id pellentesque purus volutpat vehicula. Etiam iaculis justo vitae sem sollicitudin, vitae euismod enim elementum.
⚙️ Selector 4	BD	Req4 Req8	Fusce elementum dignissim diam, id volutpat tortor. Aliquam vitae quam luctus, fringilla augue quis, pulvinar diam. Duis quis lorem

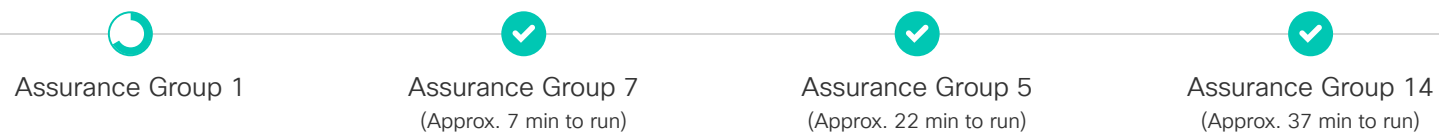
Assurance Groups

+ Create New Assurance Group | Schedule

Sort by Scheduled

15 total Assurance Groups

Current running order (4 Active Assurance Groups)



Analysis interval is 15 minutes. (Approximately 60 minutes to run one cycle)

Delete Close Stop

<p>Live Analysis</p> <p>Assurance Group 1</p> <p>■ ▶</p> <p>⚙️</p>	<p>Live Analysis</p> <p>Assurance Group 5</p> <p>▶ ▶</p> <p>⚙️</p>	<p>Live Analysis</p> <p>Assurance Group 7</p> <p>▶ ▶</p> <p>⚙️</p>	<p>Live Analysis</p> <p>Assurance Group 14</p> <p>▶ ▶</p> <p>⚙️</p>
<p>Live Analysis</p> <p>Assurance Group 2</p> <p>■ ▶</p> <p>⚙️</p>	<p>Live Analysis</p> <p>Assurance Group 3</p> <p>▶ ▶</p> <p>⚙️</p>	<p>Offline Analysis</p> <p>Assurance Group 4</p> <p>■</p> <p>⚙️</p>	<p>Offline Analysis</p> <p>Assurance Group 6</p> <p>■</p> <p>⚙️</p>
<p>Live Analysis</p> <p>Assurance Group 8</p> <p>▶ ▶</p> <p>⚙️</p>	<p>Live Analysis</p> <p>Assurance Group 9</p> <p>▶ ▶</p> <p>⚙️</p>	<p>Live Analysis</p> <p>Assurance Group 10</p> <p>▶ ▶</p> <p>⚙️</p>	<p>Live Analysis</p> <p>Assurance Group 11</p> <p>▶ ▶</p> <p>⚙️</p>
<p>Live Analysis</p> <p>Assurance Group 12</p> <p>▶ ▶</p> <p>⚙️</p>	<p>Offline Analysis</p> <p>Assurance Group 13</p> <p>■</p> <p>⚙️</p>	<p>Live Analysis</p> <p>Assurance Group 15 with a ...</p> <p>▶ ▶</p> <p>⚙️</p>	<p>Live Analysis</p> <p>Assurance Group 16 with a ...</p> <p>▶ ▶</p> <p>⚙️</p>